

SRE NETWORK 2022 Year in Review

SRE Network is a Jewish network of over 150 organizations rooted in our shared commitment to safety, respect, and equity-for all. We inspire meaningful change in workplaces and communal spaces by bringing people together to address gender-based harassment, discrimination, and inequity. Our work is focused on building community, research & learning, and strategic community investments, using an intersectional lens of gender justice.

2022 has been a significant year of growth and positive impact. We are grateful for and inspired by our team, network members, grantees, advisory board, community leaders, and funders who together made that possible.

Grantmaking



\$1.2 Million

Awarded

23

Grantees

Programs



14

Learning sessions

225

Attendees

Membership



161

Member organizations

15

New members

SSA Report



According to the **2022 Standards Self-Assessment (SSA) Membership Report**, SRE Network member organizations are successfully making gradual and steady progress towards building safer, more respectful, and equitable workplaces and communal spaces. And there is still more room to improve.

Average SSA Score: **84%**

Annual Convening



283 Individual attendees

128 Organizations registered

25 Learning sessions

Communications



2,339

Downloads

10

Media Mentions

Just Leading podcast Season 2

in Jewish and local news

Resources



10

New resources

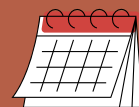
14

Videos

Looking Forward



2023 Convening
June 6-7, 2023



In Community. In Person. In New York City
(with virtual options). [Sign up for updates.](#)